

Jerry
and
Lynn



CASE
WESTERN
RESERVE
UNIVERSITY

Be Inspired by Totally Amazing People

- S. Brenner
- F. Bonhoeffer
- M. Chalfie
- F. Crick
- M. Cowan
- N. Daw
- G. Edelman
- J. Eisen
- V. Hamburger
- D. Hubel
- E. Kandel
- L. Landmesser
- S. Landis
- R. Lund
- J. Raper
- U. Rutishauser
- R. Sidman
- J. Silver
- R. Tsien
- T. Wiesel

What do biologists do?

*“They watch things happen
They move things
They kill things”*

Judith Eisen

University of Oregon

National Academy of Science, 2004

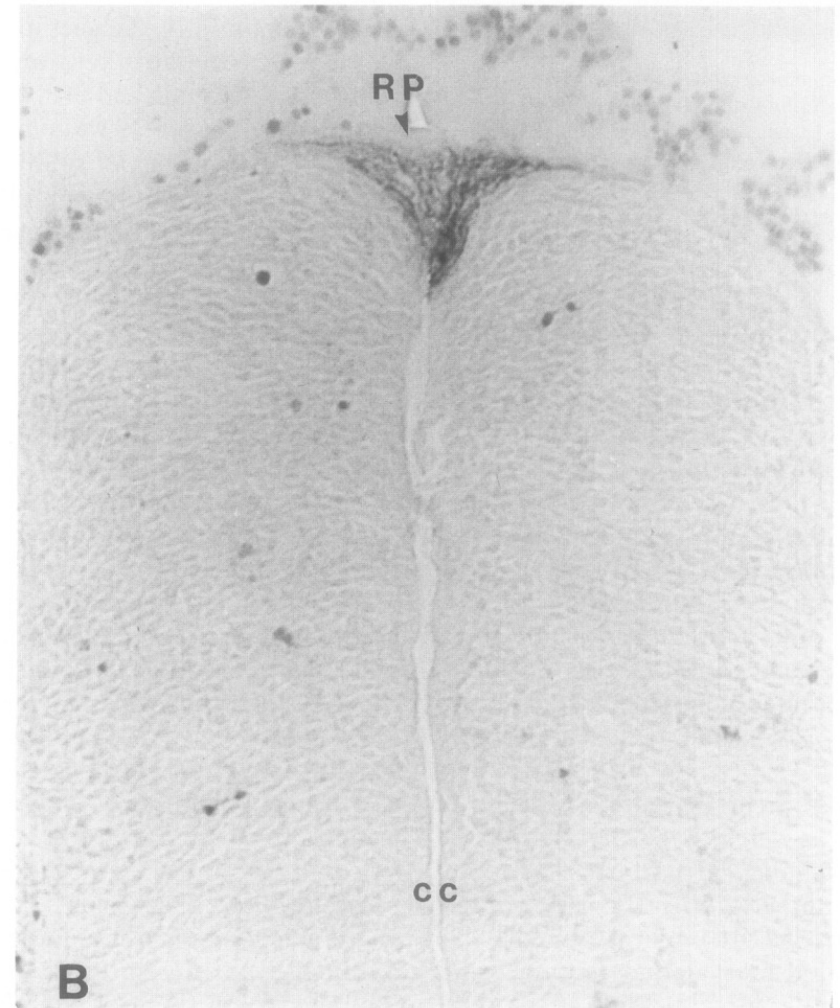
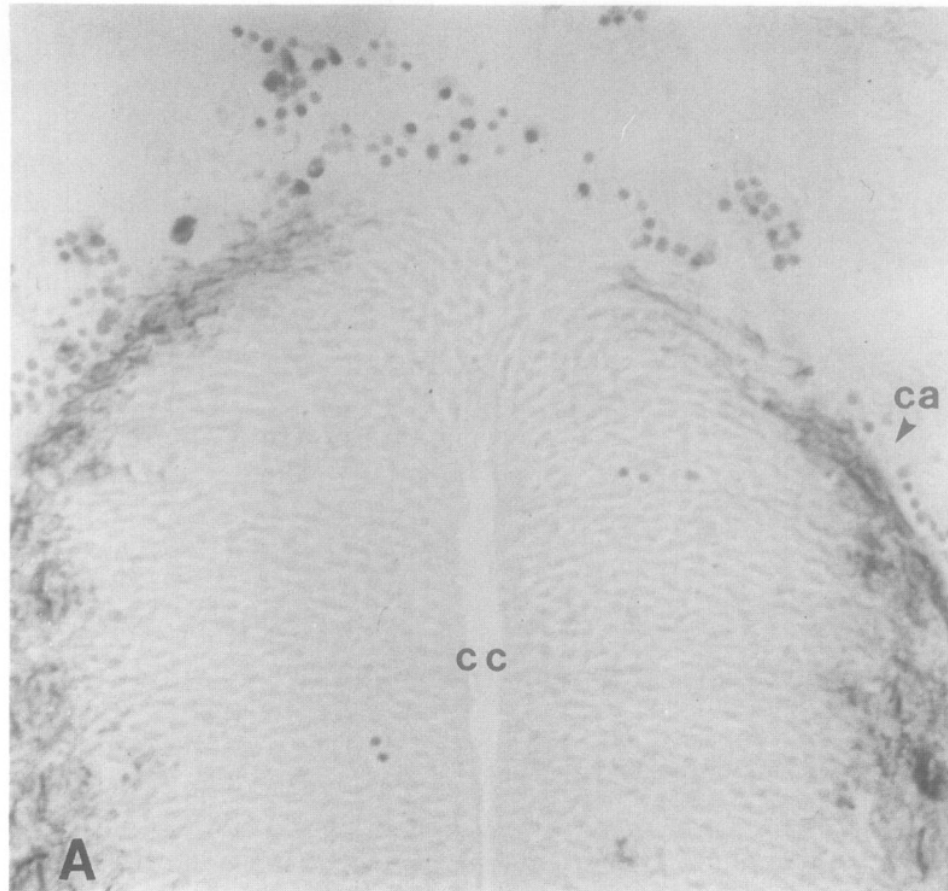
What do biologists do?

*“They watch things happen
They move things
They kill things”*

Jerry liked to look at things

Molecular and Cellular Characterization of the Glial Roof Plate of the Spinal Cord and Optic Tectum: A Possible Role for a Proteoglycan in the Development of an Axon Barrier

DIANE M. SNOW,^{*,1} DENNIS A. STEINDLER,[†] AND JERRY SILVER^{*}

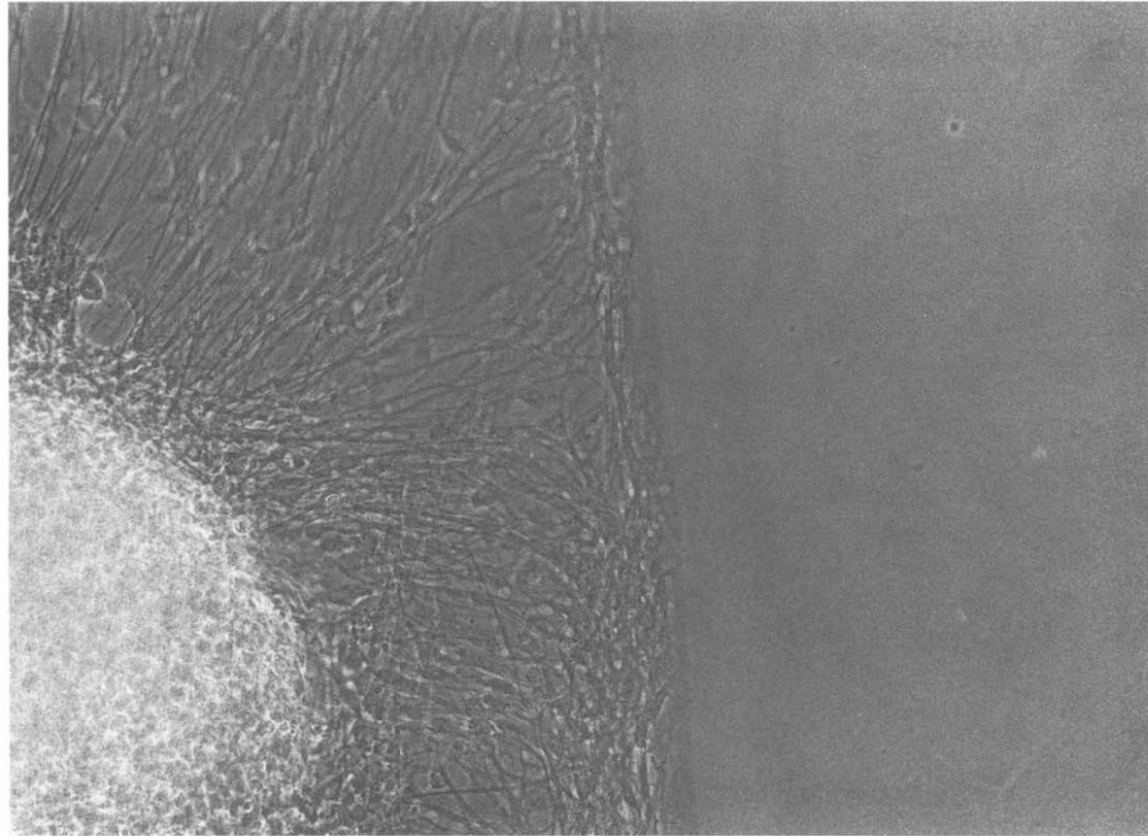


Sulfated Proteoglycans in Astroglial Barriers Inhibit Neurite Outgrowth *in Vitro*

DIANE M. SNOW, VANCE LEMMON, DAVID A. CARRINO,* ARNOLD I. CAPLAN,* AND JERRY SILVER

*Case Western Reserve University, Department of Neurosciences, School of Medicine, and *Skeletal Research Center, Cleveland, Ohio 44106*

KERATAN SULFATE/CHONDROITIN SULFATE PROTEOGLYCAN INHIBITS NEURITE ELONGATION





Lucky for me



Vance P Lemmon 

 FOLLOW

Univ. of Miami, Case Western Reserve University, Univ. of Pittsburgh, Medical Univ. of South
Verified email at miami.edu - [Homepage](#)
[neuroscience](#)

<input type="checkbox"/>	TITLE  	CITED BY	YEAR
<input type="checkbox"/>	Sulfated proteoglycans in astroglial barriers inhibit neurite outgrowth in vitro DM Snow, V Lemmon, DA Carrino, AI Caplan, J Silver Experimental neurology 109 (1), 111-130	946	1990
<input type="checkbox"/>	KLF family members regulate intrinsic axon regeneration ability DL Moore, MG Blackmore, Y Hu, KH Kaestner, JL Bixby, VP Lemmon, ... Science 326 (5950), 298-301	815	2009
<input type="checkbox"/>	Microtubule stabilization reduces scarring and causes axon regeneration after spinal cord injury F Hellal, A Hurtado, J Ruschel, KC Flynn, CJ Laskowski, M Umlauf, ... Science 331 (6019), 928-931	666	2011
<input type="checkbox"/>	An L1-like molecule, the 8D9 antigen, is a potent substrate for neurite extension. C Lagenaur, V Lemmon Proceedings of the National Academy of Sciences 84 (21), 7753-7757	557	1987
<input type="checkbox"/>	L1-mediated axon outgrowth occurs via a homophilic binding mechanism V Lemmon, KL Farr, C Lagenaur Neuron 2 (6), 1597-1603	536	1989

79,751 photos in Apple Photo

Plus, these

I will accept Venmos from Gary,
Bob, Alison, Evan, Sue, Richard,
Dennis, Ben and Story to not
share any party photos



Jerry Silver



Jerry Silver

Class Clown

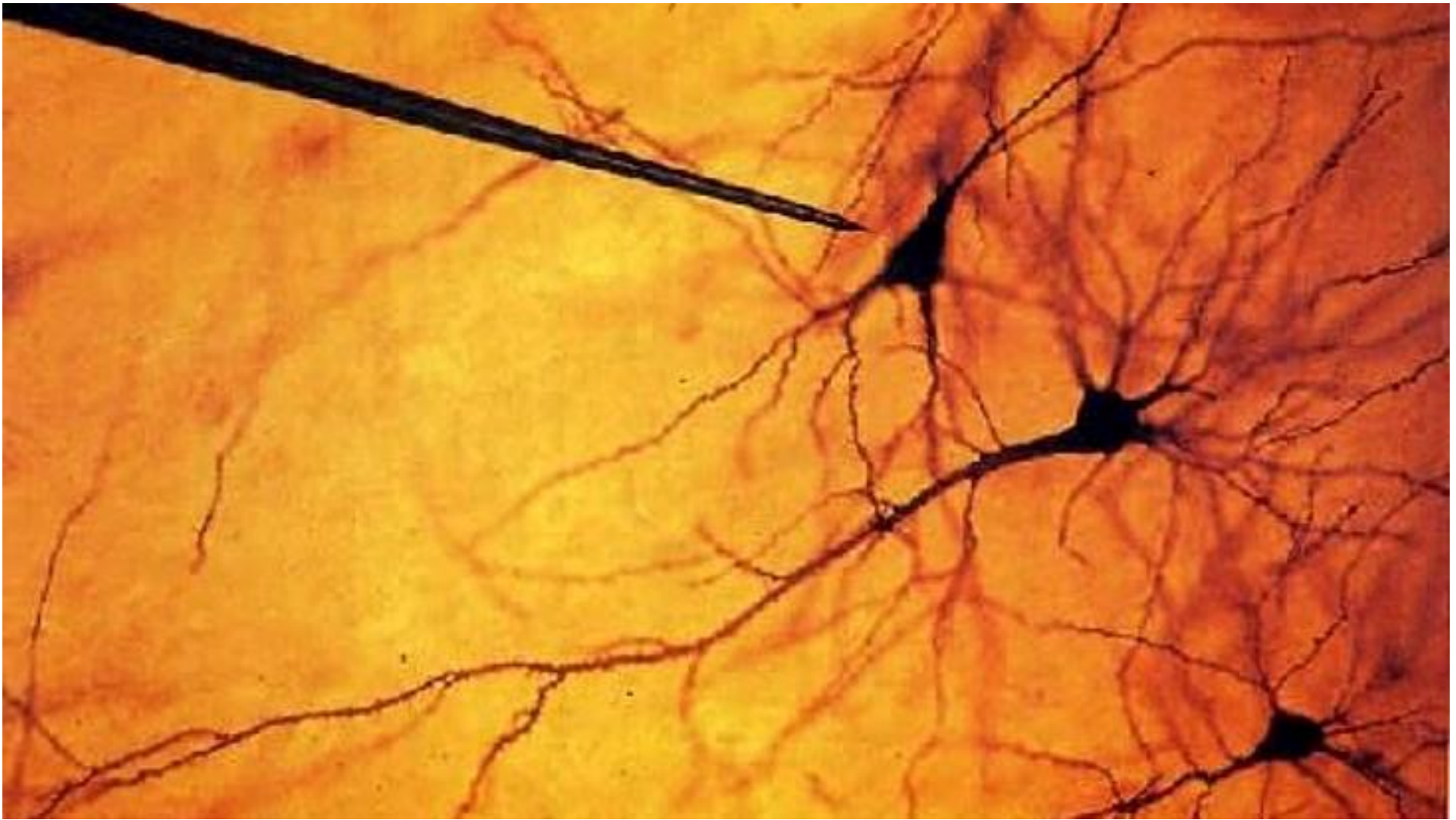


What do biologists do?

*“They watch things happen
They move things
They kill things”*

But how did they do the
moving and killing
back in the day?

Tungsten Needles!



They discovered “that” with a tungsten needle?



Hans
Spemann

Hilde
Mangold

Victor
Hamburger

Johannes
Holtfreter

Lynn Landmesser

J. Physiol. (1980), **302**, pp. 581–602

With 1 plate and 8 text-figures

Printed in Great Britain

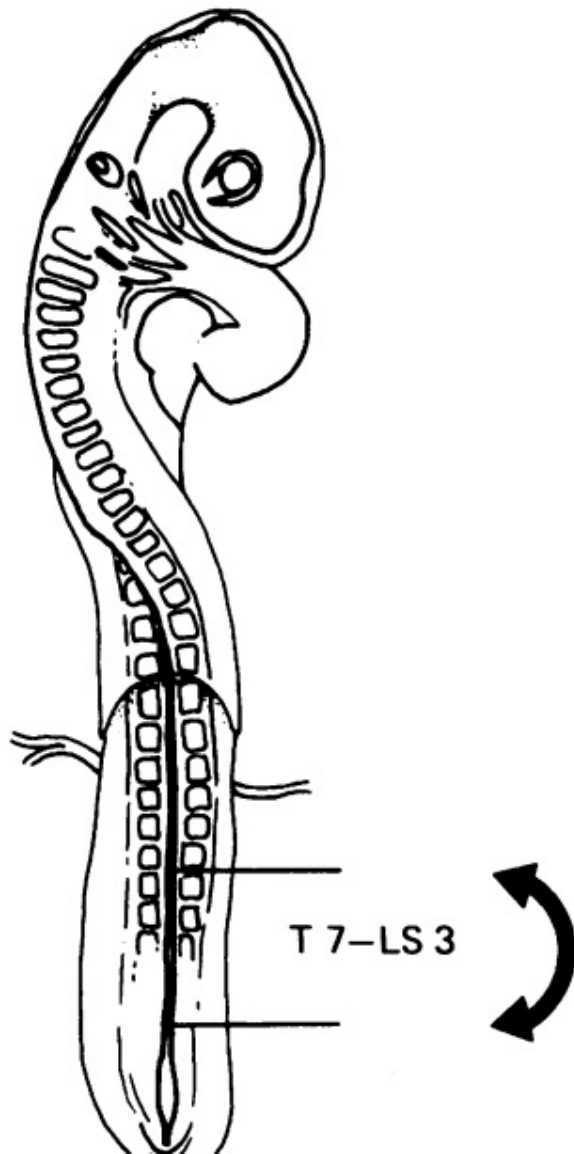
581

MOTONEURONE PROJECTION PATTERNS IN THE CHICK HIND LIMB FOLLOWING EARLY PARTIAL REVERSALS OF THE SPINAL CORD

BY CYNTHIA LANCE-JONES AND LYNN LANDMESSER

*From the Biology Department, Yale University,
New Haven, Connecticut 06520, U.S.A.*

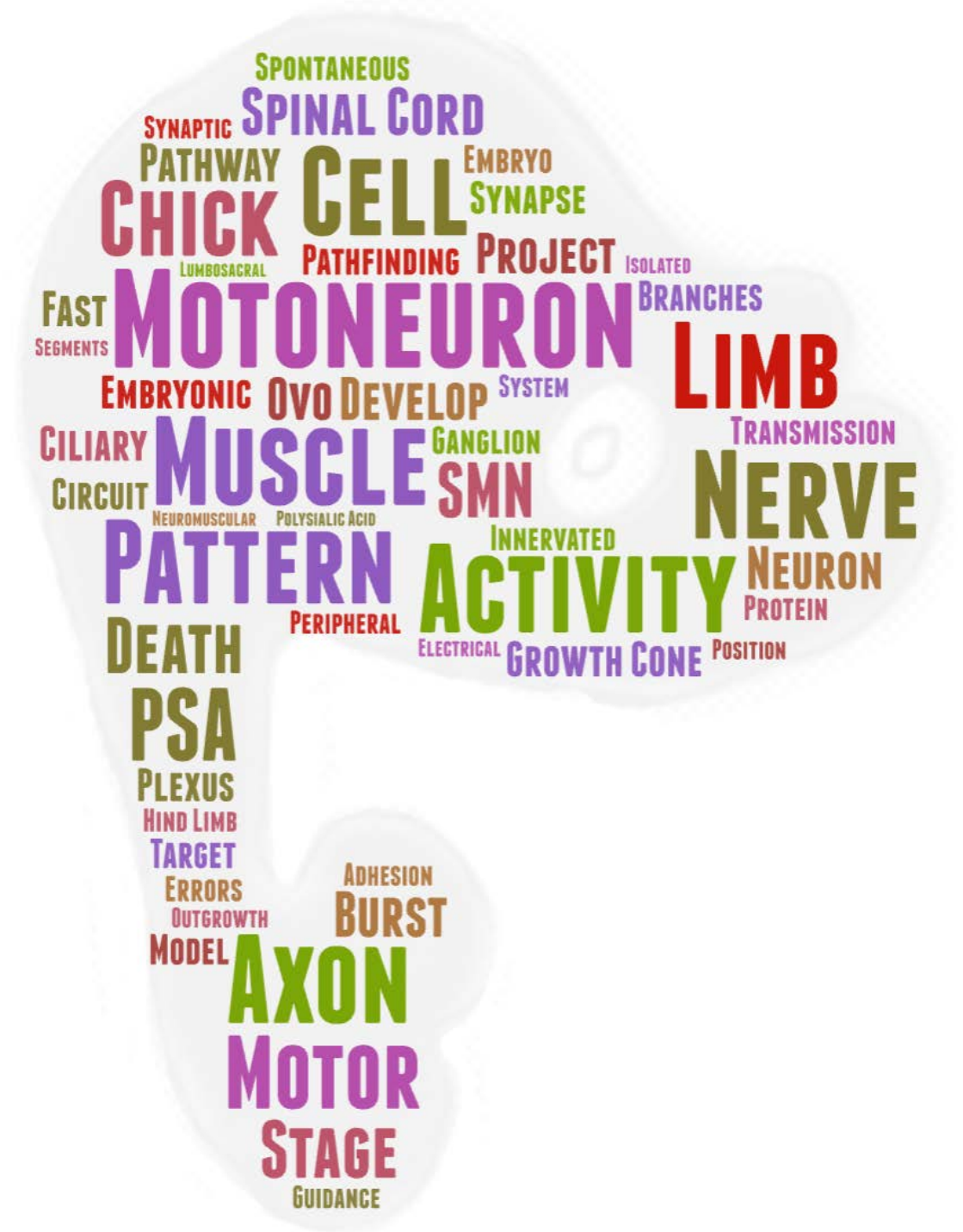
(Received 11 July 1979)



“The spinal cords segments were freed laterally from the somatic tissue with tungsten needles.”

Lynn Landmesser

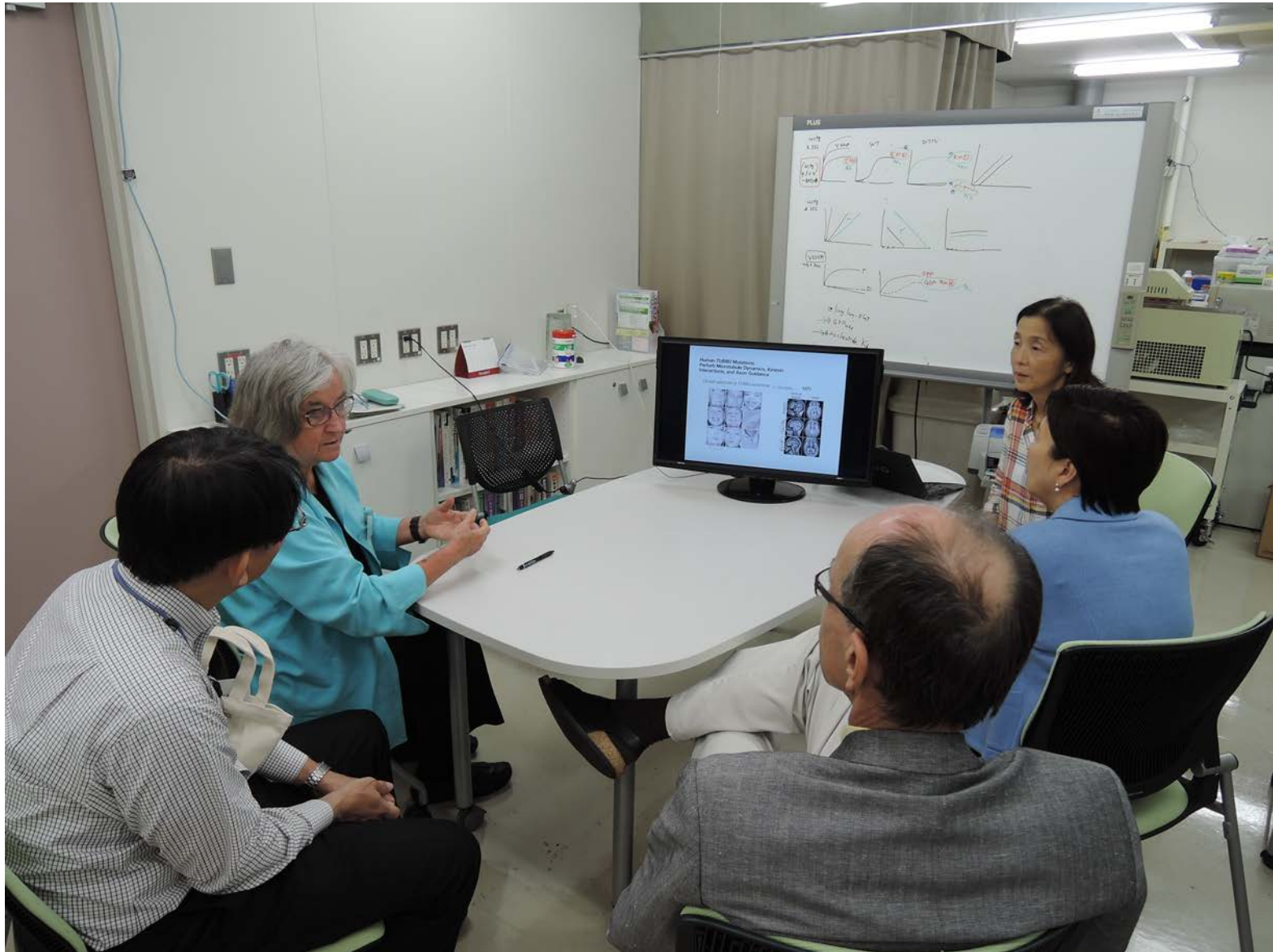
Hamburger & Hamilton
Stage 20 / Day 3
Chick Embryo



RIKEN Brain Science Institute - Center for Brain Science



Boots on the Ground



Researchers
Students

ABOUT

Faculty

News & Media

Careers

Life at CBS

In memory of Lynn T. Landmesser (1943–2024)

With deep sympathy for her family, friends, and colleagues, the RIKEN Center for Brain Science (CBS) mourns the loss of Professor Lynn T. Landmesser of Case Western Reserve University.

Professor Landmesser's pioneering and groundbreaking work on motor axon guidance significantly advanced our understanding of how neural connections are precisely formed. Her research provided invaluable insights into the developmental processes of the nervous system and laid the foundation for addressing neural repair and developmental disorders.

Beyond her scientific accomplishments, Professor Landmesser was a dedicated mentor and leader, inspiring generations of researchers with her passion for discovery. She was renowned for her warmth towards young researchers and passion for encouraging and guiding them to success. Her contributions also extended to the development of BSI, the predecessor institution of CBS, where, as a member of the Brain Science Advisory Councils in 2004, 2006, 2009, 2011, 2014, 2016, and 2019 she played a pivotal role in shaping the center's scientific direction and enhancing its global prominence.

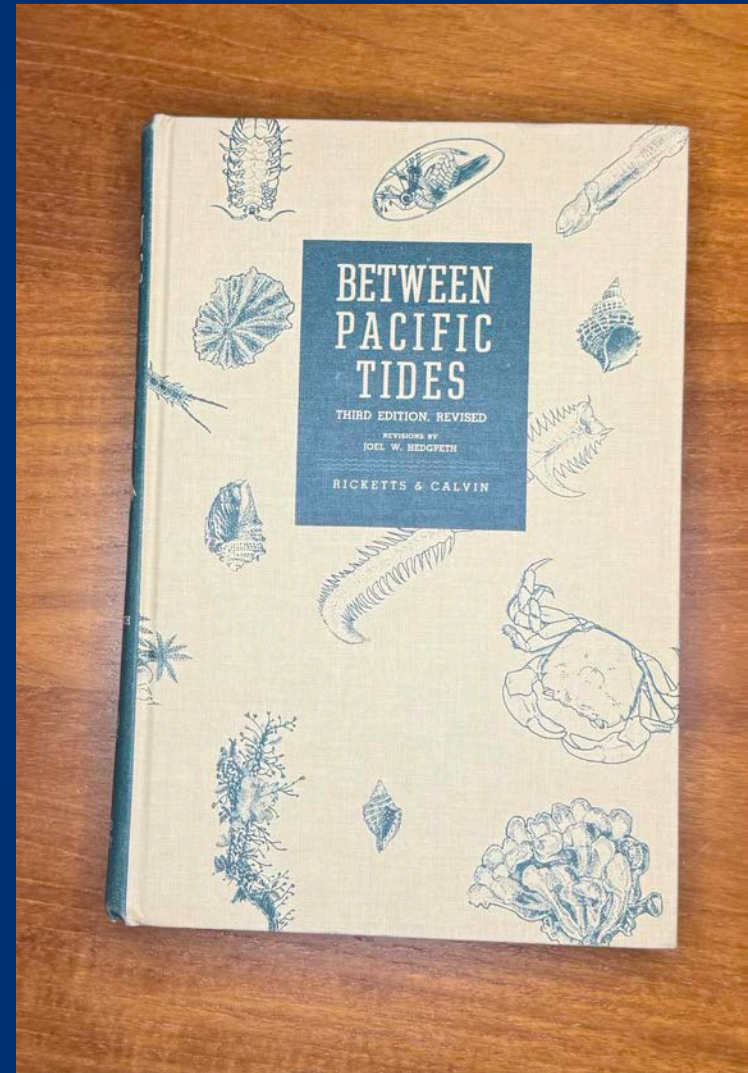


Lynn T. Landmesser

Photo graciously shared by her son, Mr. Gabriel Pilar.



Jerry
and
Lynn



Ed Ricketts

Jerry and Lynn

than to answer questions. It says in effect: look at the animals, this is what we seem to know about them but the knowledge is not final, and any clear eye and sharp intelligence may see something we have never seen. These things, it says, you will see, but you may see much

or one can indulge perhaps the greatest human excitement: that of observation to speculation to hypothesis. This is a creative process,

This book then says: "There are good things to see in the tide-pools and there are exciting and interesting thoughts to be generated from the seeing. Every new eye applied to the peep hole which looks out at the world may fish in some new beauty and some new pattern, and the world of the human mind must be enriched by such fishing."

JOHN STEINBECK